

TOP ACCESS FLOOR TRAP SYSTEM LOOKS BETTER & FLOWS FASTER

S4



**WITH A
ZERO WATER SEAL
FEATURE**



Introduction



Sansico Industries Sdn Bhd

For over 20 years now, Sansico Industries Sdn Bhd has accumulated a healthy and strong market reputation of providing quality products to customers. We have since progressed to be one of the leading manufacturers for cold water plumbing systems and as well as top access floor trap systems for wastewater management.



Sansico™ launched its first top access floor traps in 2008 and won the new product award for our S1 & S2 models in the prestigious ARCHIDEX 2009. And in the year 2017 we won another new product award again for our innovative 360-aligning collar in the ARCHIDEX 17 exhibition. Our floor trap systems have been successfully and widely used in condominiums/houses, hospitals, commercial buildings, offices, hypermarkets and in overseas i.e., Singapore, Indonesia, Thailand, Cambodia & Vietnam.

With entrepreneurial thinking, we have revolutionised our floor trap design to eliminate all problems faced by the top access floor traps in the market. Thus, we proudly present our latest patented state of the art - **S4 model**. The SIRIM approved S4 has overcome all the shortcomings of a top access floor trap system. With its elegant and sleek design, it has an additional feature called “Zero Water Seal” that solves the fast dried-up water seal issue. To add icing on the cake, it comes with the largest range of locally manufactured quality floor gratings in the market. This allows for flexibility and many architecturally pleasing top finishing designs in the bathroom.

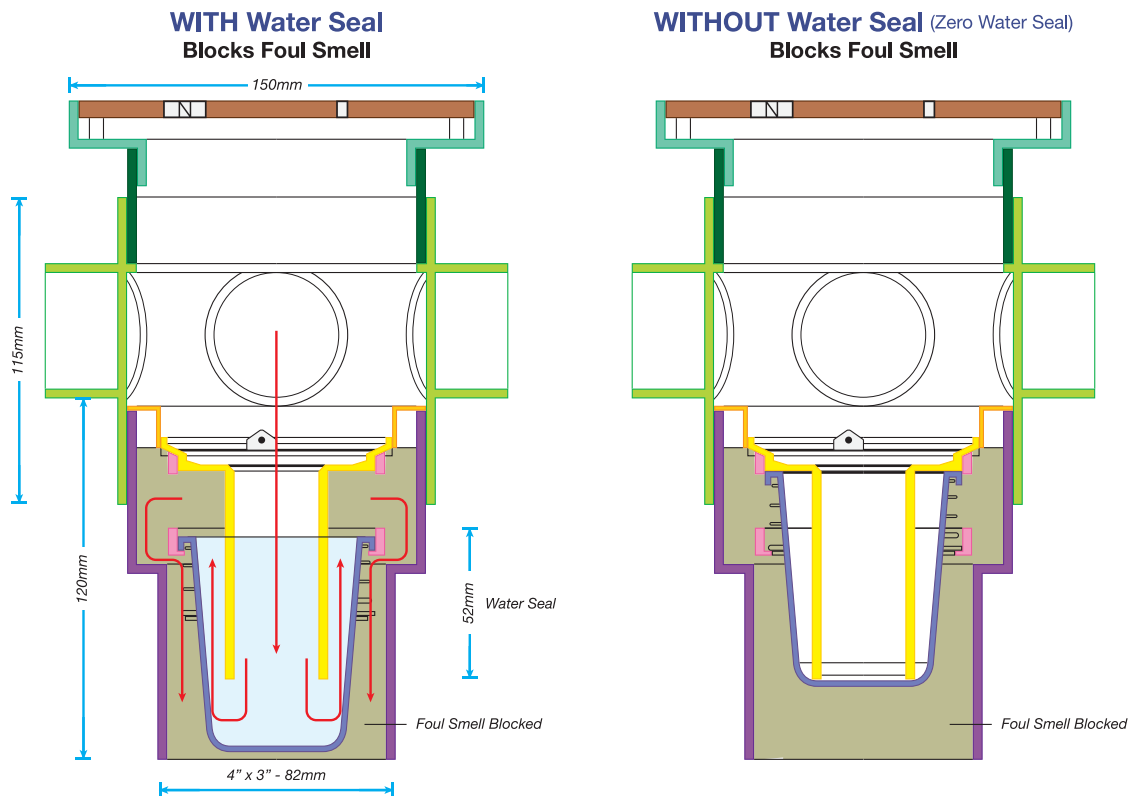
Top Access Floor Trap System

S4 Model

Flow rate: 80 litres per minute *Sirim requirement: 48 litres / minute

Dimensions of **S4 Model** Top Access Floor Trap System 4" Pipe Sleeve

The S4 Floor Trap System can function normally with or without Water Seal



Tests undergone by the SANSICO™ S4 Floor Trap/Gulley



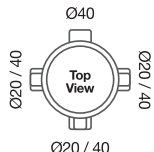

- Load Test
- Depth of Water Seal
- Resistance of Water Seal to Pressure
- Access for Cleaning
- Anti Blockage
- Temperature Cycling
- Odour Tightness
- Water Tightness
- Flow Rate Test



Benefits of S4 Trap system:

- ✓ Zero Water Seal -> This additional feature will activate when the water seal is fully evaporated
- ✓ Compact and elegant design
- ✓ Prevents foul smell and insects from entering the house
- ✓ Easy top access cleaning and maintenance
- ✓ Higher false ceiling, space saving
- ✓ 75mm opening for easy rodding & cleaning
- ✓ Comes with built-in sockets/inlets that provide quick connection for air conditioner & washing machine drain pipes to trap body (pipe sleeve)
- ✓ Air conditioner condensation water isolated
- ✓ Resilient stainless steel 304 spring that resists chemicals and endures over 300,000 oscillatory cycles.

S4 Trap System Product Code

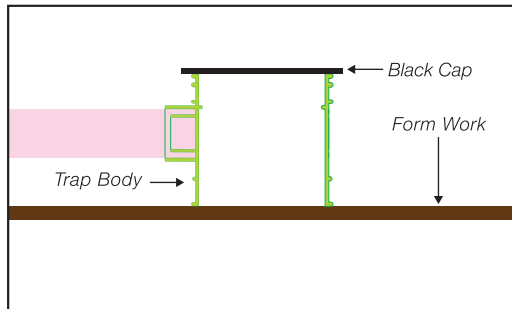
Bucket Trap	Trap Body	Outlet
 S4-BT	 S3-TBIN 	 S4-OL4X3

S4

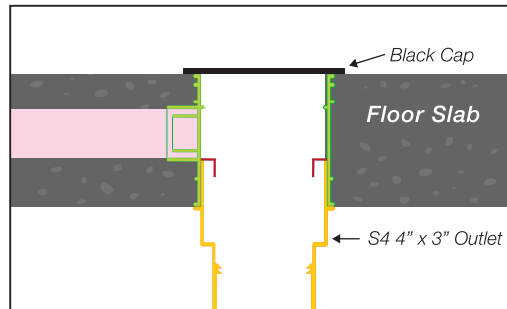
Installation Method

Recommended slab thickness 125mm and above.

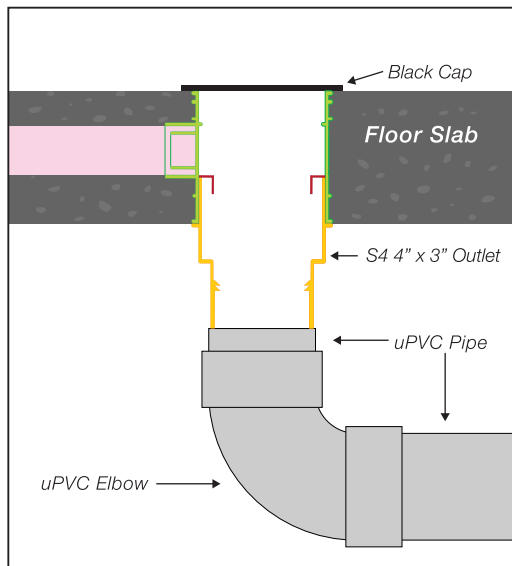
Step 1: Nail the trap body to form work, connect the drain pipes or air-cond discharge pipes if any.



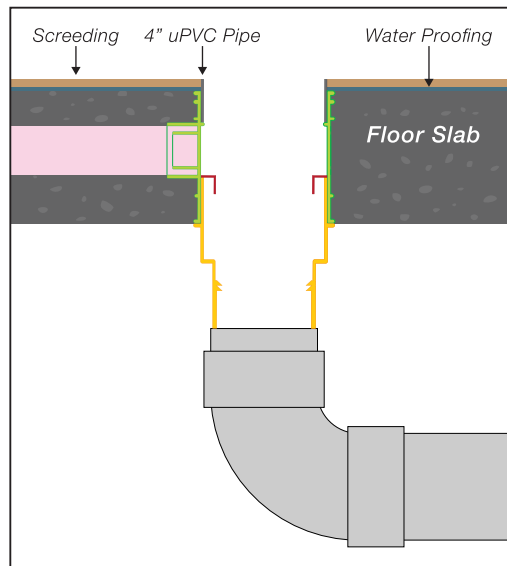
Step 2: Remove form work, fix outlet (with solvent cement).



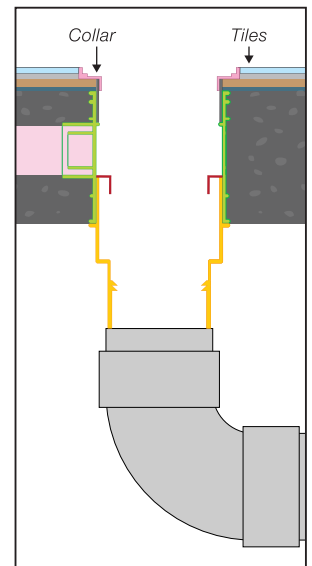
Step 3: Join bend or tee (with solvent cement) and fix uPVC pipe



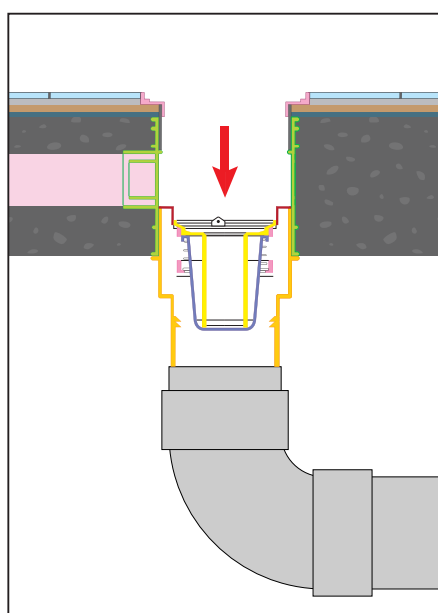
Step 4: Remove black cap (cover), join 4\"/>



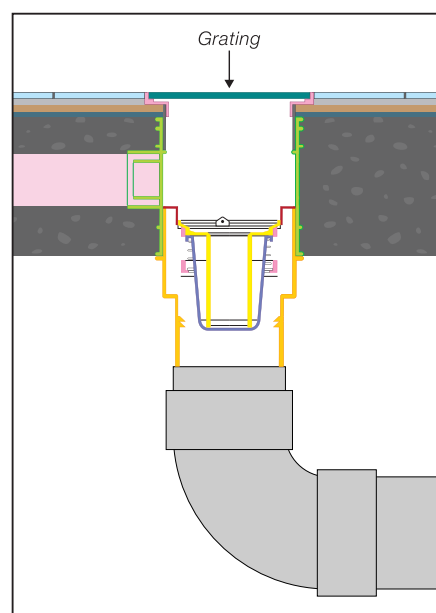
Step 5: Place collar and flush with tile work.



Step 6: Place bucket trap.

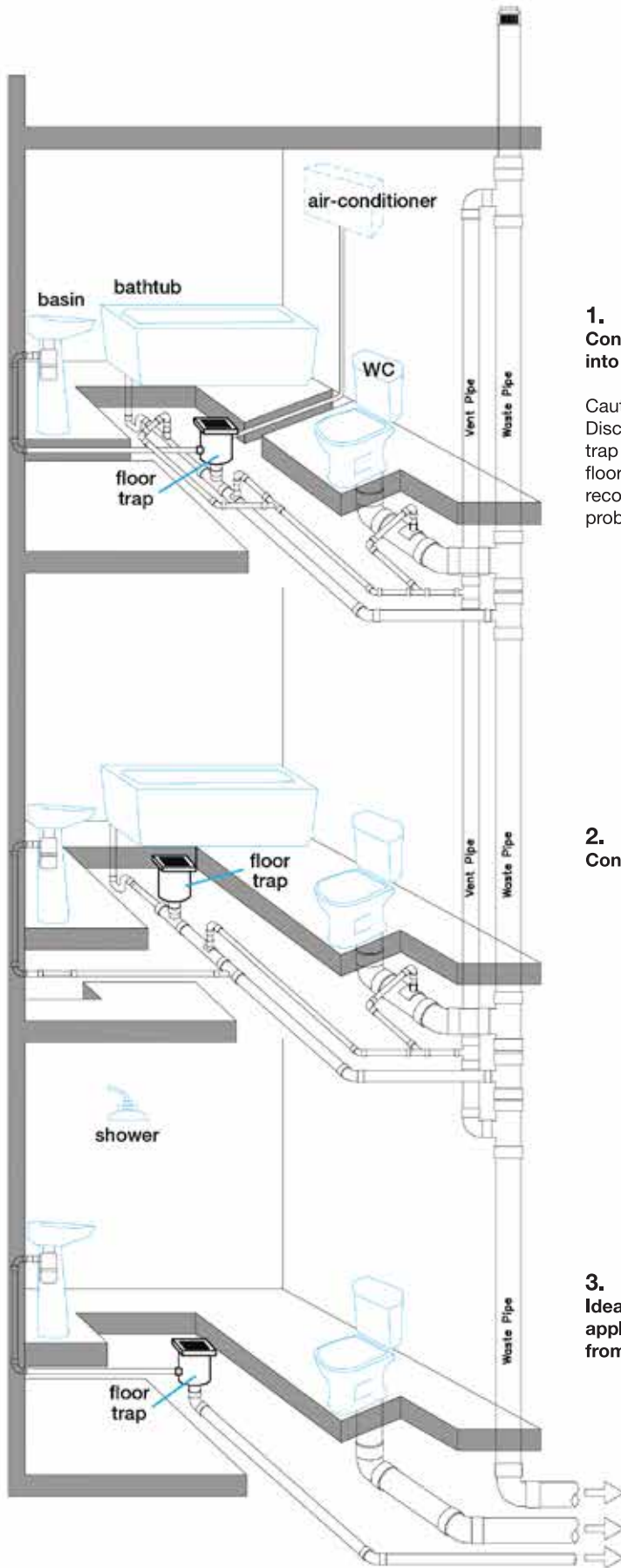


Step 7: Place grating.
Installation completed.



It is recommended to use the black cap cover during installation and concreting.

Schematic Layout



1. Connection of basin & air-cond pipe into trap body

Caution:
Discharge of air-cond pipe into floor trap may cause condensation on the floor trap base. Insulation is recommended to prevent the problem.

2. Connection of basin below trap.

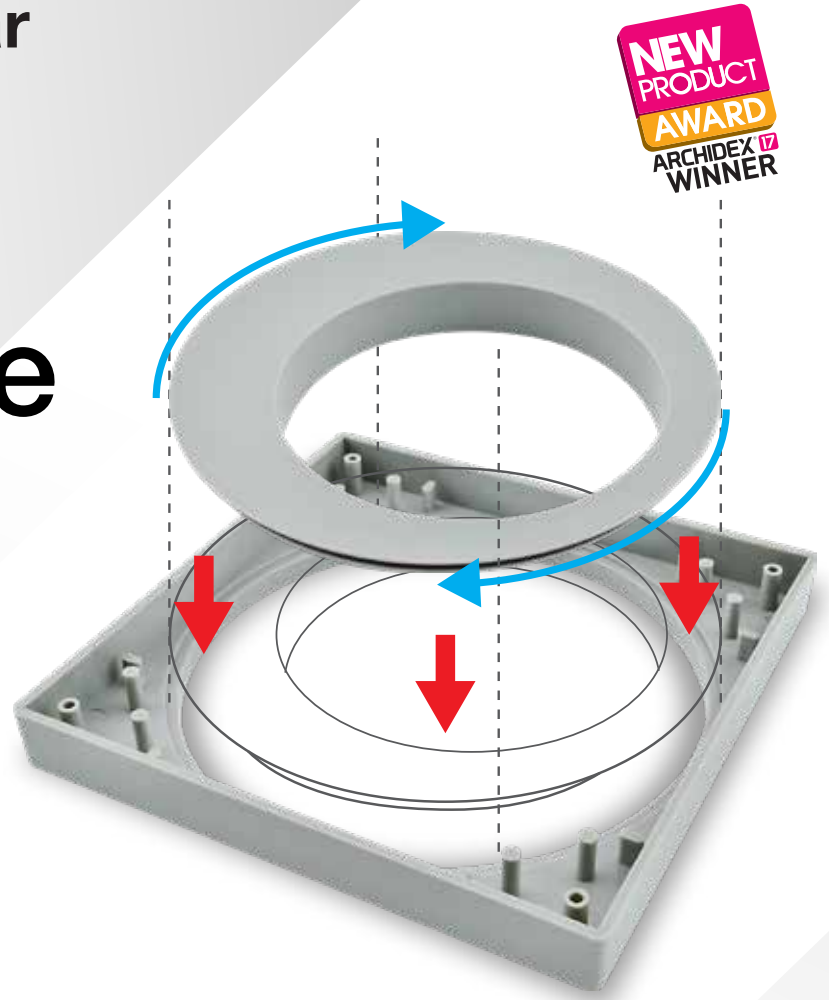
3. Ideal solution for ground floor applications, to allow servicing from top.

Discharge to inspection chamber

360° Aligning Collar

Another Innovative product from us.

"A great value item, makes life easier for the end user".



With the many obvious benefits, advantages and increasing popularity of in-slab floor traps, there is an increasing need to have easy and uninterrupted access to the inside of these traps for maintenance purposes.

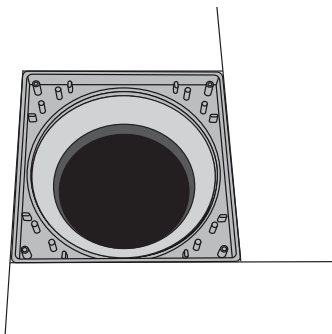
Towards this end, Sansico has patented an **ingenious floor trap collar system** that gives unlimited and full access to the floor trap. The opening size is even larger than the trap itself, this provides easy access for maintenance and repair.

The central part of this collar is rotatable and allows for a misalignment up to 20mm (in any direction) in the collar placing, this can sometimes happen during tiling.

Usage of this collar eliminates all problems associated with access to floor traps for maintenance.

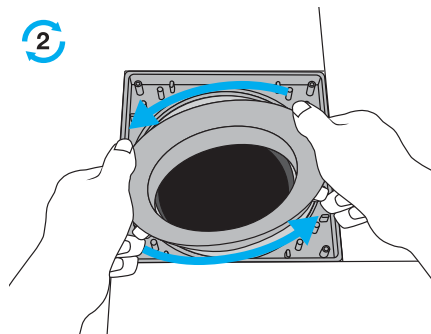
Installation Method

1



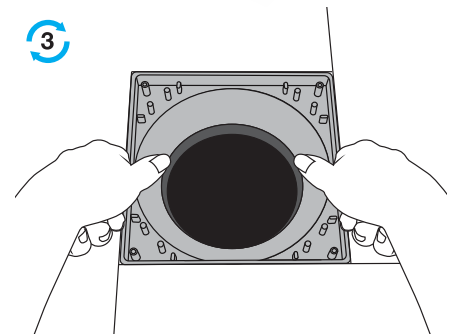
Install collar frame.

2



Adjust position by using adjustable collar insert.

3



Push the collar insert into collar frame.



We recommend using our Sansico floor gratings together with the S4 Top Access Trap System to ensure full compatibility. View our floor grating options here:



*Scan to download the
Grating & Collar Catalogue*

SANSICO

HANSEN

Sansico Industries Sdn Bhd (448766-D)

No. 20, Jalan Uranus AK U5/AK,
Taman Subang Impian, Seksyen U5,
40150 Shah Alam, Selangor.

Tel : (603) 7859 7299 (Hunting Line)

Fax : (603) 7859 0299

E-mail : enquiry@sansico.com.my

Website : www.sansico.com.my