



**SIRIM 9:2017
CERTIFIED**

SANSICO

HANSEN

HANSEN[™] STOPCOCK

**FOR USE WITH
POTABLE WATER**



Long Leveller
c/w stopcock body



Flat Leveller
c/w stopcock body



**Designed for use with PE100 pipes:
BBB Sansico Hansen or CS Sansico Hansen**

EFFICIENCY REDEFINED: SUPERIOR WATER DELIVERY

COMPLIED WITH SIRIM 9 TEST REQUIREMENT

Torque Test:

HSC DN20: 6 Nm - **Passed**

HSC DN25: 6 Nm - **Passed**

HSC DN32: 6 Nm - **Passed**

Rate of Flow Capacity:

HSC DN20: 24L/min - **Passed**

HSC DN25: 42L/min - **Passed**

HSC DN32: 72L/min - **Passed**

Hydrostatic Performance:

20°C, 1 hour, 53 bar - **Passed**

80°C, 1000 hours, 25 bar - **Passed**

Endurance Test:

With a pressure between 2 bar and 4 bar and a flow rate of between 4L/min and 6L/min.

Repeat the above opening and closing for 10,000 cycles - **Passed**

Leak Tightness:

Obturator only

16 bar/min - **Passed**

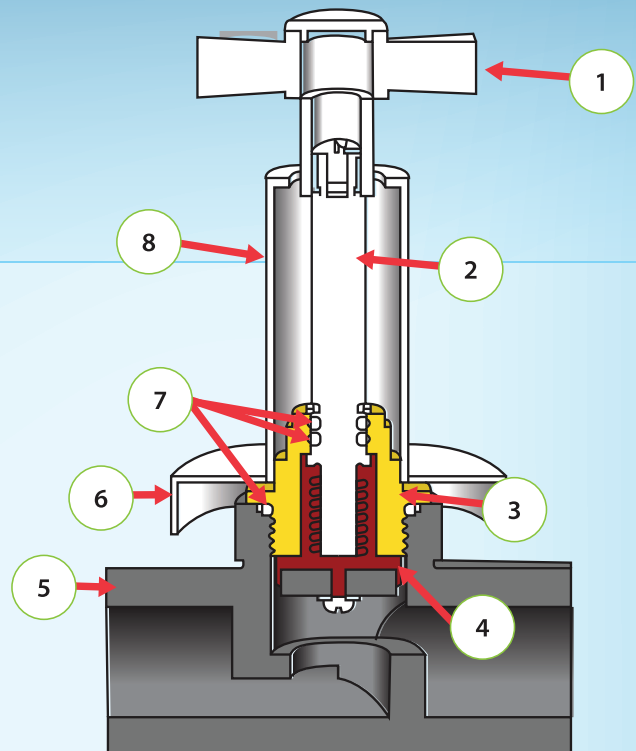
With assembled stopcock

16 bar/min - **Passed**

0.2 bar/min - **Passed**

Pressure Resistance:

25 bar for 10 minutes - **Passed**



TECHNICAL INFORMATION OF CHROME CROSS HANDLE STOPCOCK

Size	20mm (1/2")	25mm (3/4")	32mm (1")
Pressure Rating	PN20	PN16	PN16
Flowrate	0.3L/s	0.62L/s	0.83L/s
1. Cross Handle	Steel Chrome Coated		
2. Stem	Brass Bpb57-3		
3. Bonnet	Brass Bpb57-3		
4. Disc Holder	Brass Bpb57-3		
5. Body	POK		
6. Wall Flange	Brass Bpb57-3		
7. O-Ring	Nitrile Butadiene Rubber (NBR)		
8. Sleeve	Brass Bpb57-3		



Easy to Install

Designed for fast and easy installation with no special tools or expertise required.



Leak Prevention

Ensures a secure, leak-proof connection with high-quality materials and a well-engineered structure.



Precision Flow Control

Provides smooth operation for easy handling without compromising performance.



Compatibility

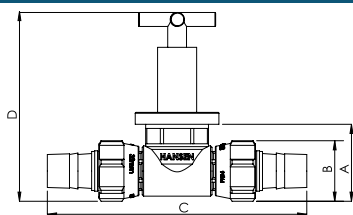
Works with PE100 PN20 (20mm) and PN16 (25mm & 32mm) pipes, supporting up to 20 bar pressure for safe and reliable performance in demanding applications.



Cost-Effective & Flexible

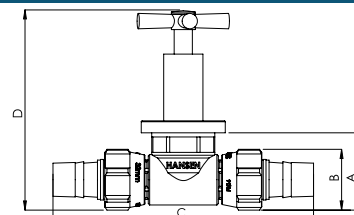
Made from POK material for the optimal balance of durability, flexibility, and cost-effectiveness, delivering premium quality at a competitive price.

Hansen Stopcock - Cross Handle - Standard Series (Whole Set)



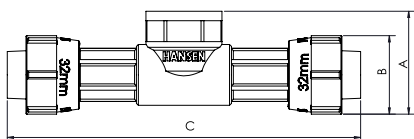
Code	Size	A	B	C	D
HSC-C 20	20	39	29	168	121
HSC-C 25	25	43	36	170	125
HSC-C 32	32	51	44	186	130

Hansen Stopcock - Cross Handle - A Series (Whole Set)



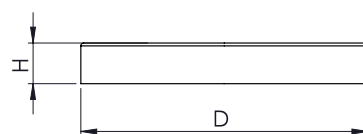
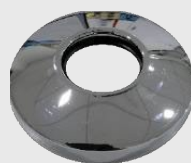
Code	Size	A	B	C	D
HSC-C 20A	20	39	29	168	123
HSC-C 25A	25	43	36	170	128
HSC-C 32A	32	51	44	186	133

Hansen Stopcock - Body only (Loose Set)



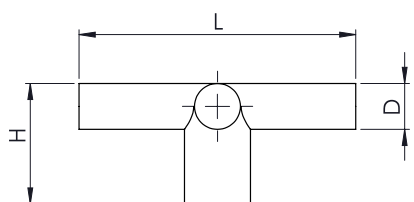
Code	Size	A	B	C
HSCB-20	20	45	29	168
HSCB-25	25	49	36	170
HSCB-32	32	55	44	186

Chrome Stop Valve - Flange (Loose Item)



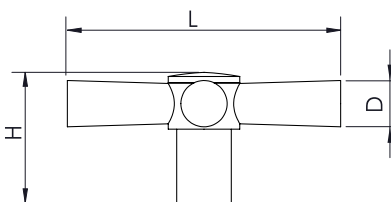
Code	Size	D (mm)	H (mm)
SF-CSV-FL	20-32	60.5	9.5

Chrome Stop Valve - Cross Handle - Standard (Loose Set)



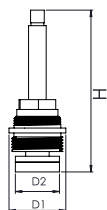
Code	Size	D (mm)	H (mm)	L (mm)
SF-CSV-XH	20-32	9.5	26.7	56.6

Chrome Stop Valve - Cross Handle - A Series (Loose Item)



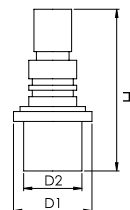
Code	Size	D (mm)	H (mm)	L (mm)
SF-CSV-XHA	20-32	11	27	67

Chrome Stop Valve - Cartridge (Loose Set)



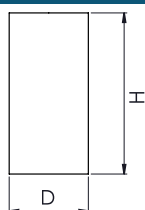
Code	Size	D1 (mm)	H (mm)	D2 (mm)
SF-CSV-CAT18	20-32	28	81	23

Chrome Stop Valve - Cartridge Extension (Loose Item)



Code	Size	D1 (mm)	H (mm)	D2 (mm)
SF-CSV-EXT	20-32	15.8	33.5	11.7

Chrome Stop Valve - Tube - Standard (Loose Set)



Code	Size	D (mm)	H (mm)
SF-CSV-T	20-32	26	57

Chrome Stop Valve - Tube Extension (Loose Item)



Code	Size	D (mm)	H (mm)
SF-CSV-TBX	20-32	26	81

INSTALLATION METHOD

1



Step 1

Cut the HDPE pipe using pipe cutter to the required length.

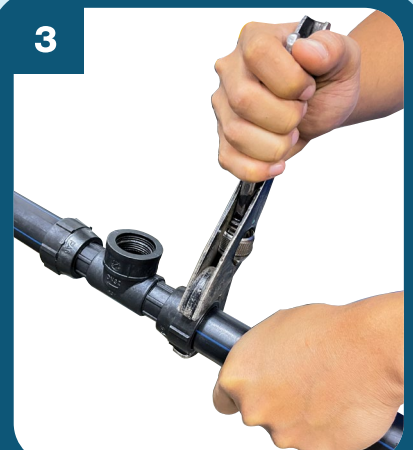
2



Step 2

Push the stopcock body into the pipe until it reaches the stopper.

3



Step 3

Wind the nut onto pipe a few turns. Tighten it using pipe wrench.

4



Step 4

Install cartridge and tighten it using adjustable or ring spanner.

5



Step 5

Complete the assembly by fitting the chrome accessories.

6



Step 6

Simply the best. No fusion, crimping or solvent cement. Engineered for seamless installation, durability, and leak-tight performance.

SANSICO

HANSEN

Sansico Industries Sdn Bhd (448766-D)

No. 20, Jalan Uranus AK U5/AK, Taman Subang Impian,
Seksyen U5, 40150 Shah Alam, Selangor.

Tel : (603) 7859 7299 (Hunting Line) Fax : (603) 7859 0299

Website : www.sansico.com.my E-mail : enquiry@sansico.com.my